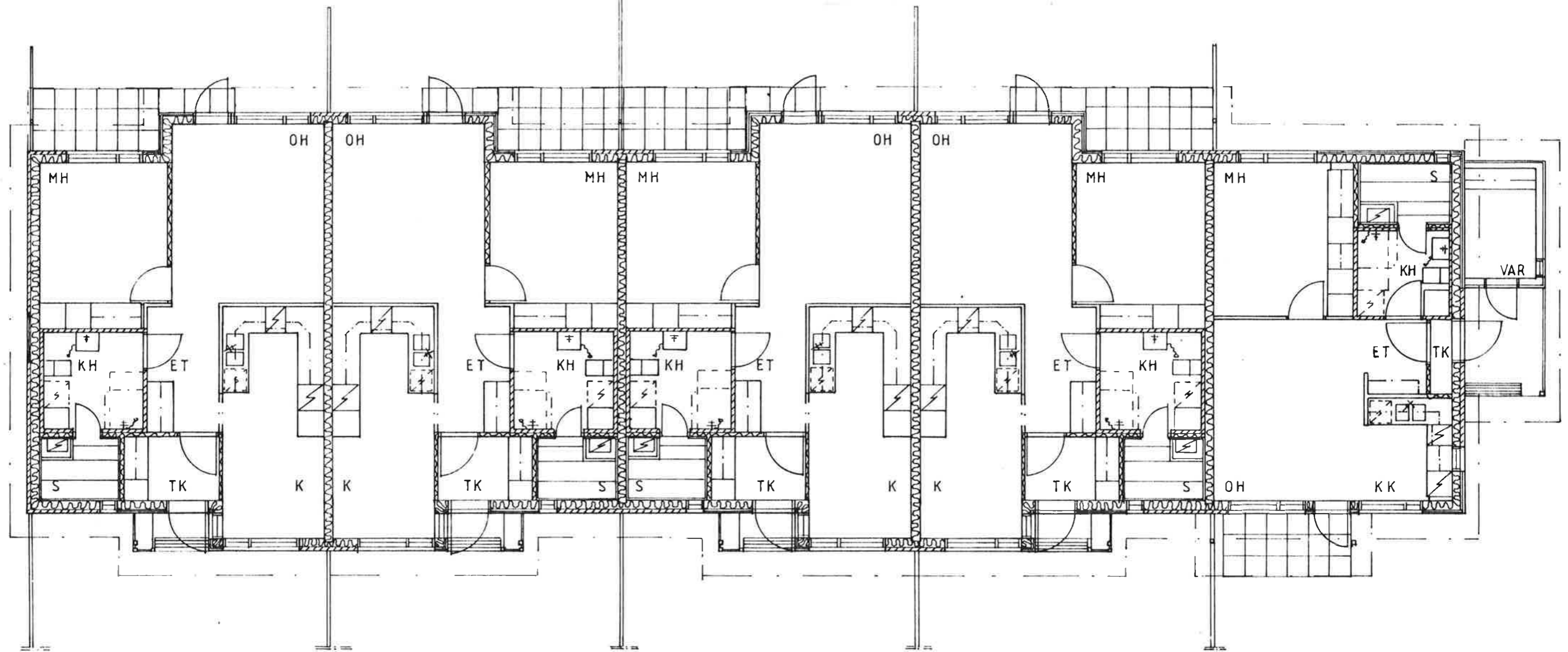


34 016

3 143 7 990 5 910 7 990 8 983 1 900



4 340 5 596 8 304 5 596 10 180

2 H+K= 59,5

2 H+K= 59,5

2 H+K= 59,5

2 H+K= 59,5

2 H+KK= 45

HUONEISTOALA	283 m ²
KERROSALA	322,5 m ²
TILAVUUS	1100 m ³